



**Subject:** Grade 8 Social Sciences (Geography)  
**Topic:** Social Sciences (Geography): Exam Term 2  
**Total:** 98 Marks

**Name:** \_\_\_\_\_

**Date:** \_\_\_\_\_

---

**Question 1: True/False**

2 marks

Coastal areas generally receive less rain than inland areas.

**TRUE**

**FALSE**

---

**Question 2: Please Fill In The Blanks**

4 marks

The general rule is that for every (1) increase in altitude, the temperature drops by (2).

Possible Answers: 1 000 metres | 10 kilometres | 10° C | 6,5° C | 100 metres | 1C | 1° C

**1**

**2**

---

**Question 3: Multiple Choice**

4 marks

John is a quarter of the way up a mountain and the temperature is 12°C.

What is the probable temperature 1 000 m above this point?

**A** 5,5°C

**B** 3°C

**C** 11°C

**D** 0°C

---



**Question 4: Multiple Choice**

4 marks

The only province in South Africa that receives winter rainfall is ... .

- A** the Western Province
- B** Mpumalanga
- C** Kwa-Zulu Natal
- D** the Eastern Cape
- E** the Free State

**This image refers to question: 5**



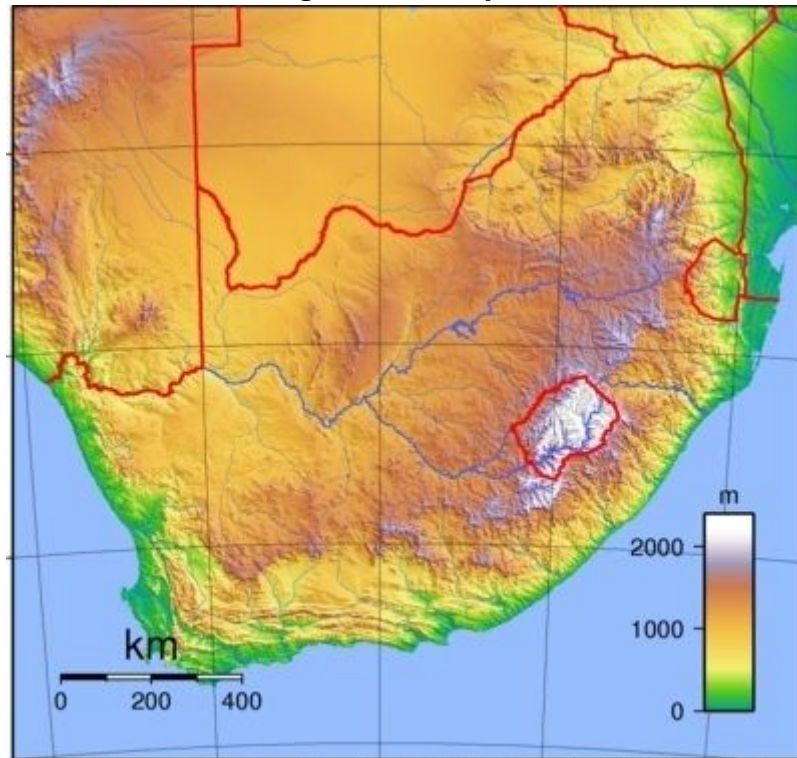
**Question 5: Text Input**

3 marks

By using degrees and minutes we can pinpoint places to within less than 2 km of accuracy.

We rarely show ... on a map.

**This image refers to question: 6**



[https://af.wikipedia.org/wiki/Kaart#/media/File:South\\_Africa\\_Topography.png](https://af.wikipedia.org/wiki/Kaart#/media/File:South_Africa_Topography.png)  
June 2007

**Question 6: Text Input**

3 marks

The towns in South Africa which are situated 1 500 m above sea level have ... temperatures than the coastal towns.

**This image refers to question: 7**



**Question 7: Please Fill In The Blanks**

4 marks

Look at the time on the Big Ben (Clock Tower) in London.

During the winter in England, the time in South Africa will be (1) and during the summer in England, the time in South Africa will be (2).

Possible Answers: 11: 35 | 13: 35 | 12: 35 | 10: 35

<b>1</b>	<input type="text"/>
----------	----------------------

<b>2</b>	<input type="text"/>
----------	----------------------

---

**This image refers to question: 8**



**Question 8: Multiple Choice**

4 marks

The continent of South America lies in ...hemispheres.

- |          |                   |
|----------|-------------------|
| <b>A</b> | two               |
| <b>B</b> | three             |
| <b>C</b> | four              |
| <b>D</b> | none of the above |

**This image refers to question: 9**



**Question 9: Multiple Choice**

4 marks

These plants are found in a ... climate.

- |          |               |
|----------|---------------|
| <b>A</b> | continental   |
| <b>B</b> | subtropical   |
| <b>C</b> | Mediterranean |
| <b>D</b> | Tundra        |

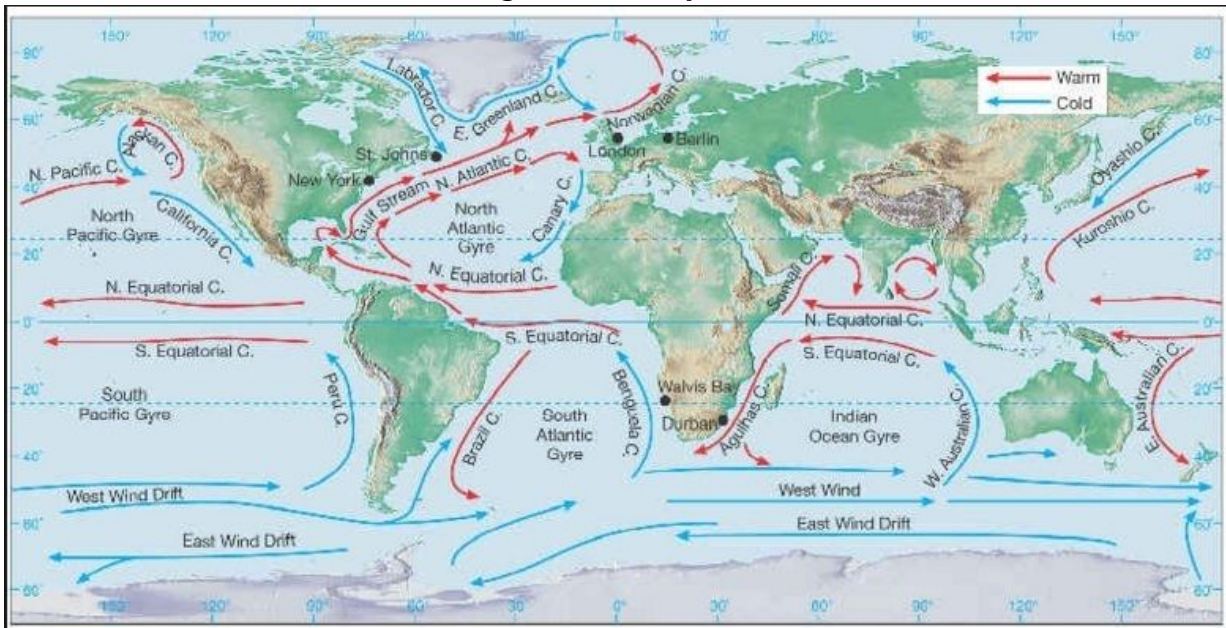
**Question 10: Text Input**

3 marks

South Africa's Standard Time is set in relation to the Greenwich Meridian Time. As South Africa is situated 30° longitude away from London, when it is 15:00 in London, it is ... in Cape Town.

Give the answer in digital time.

**This image refers to question: 11**



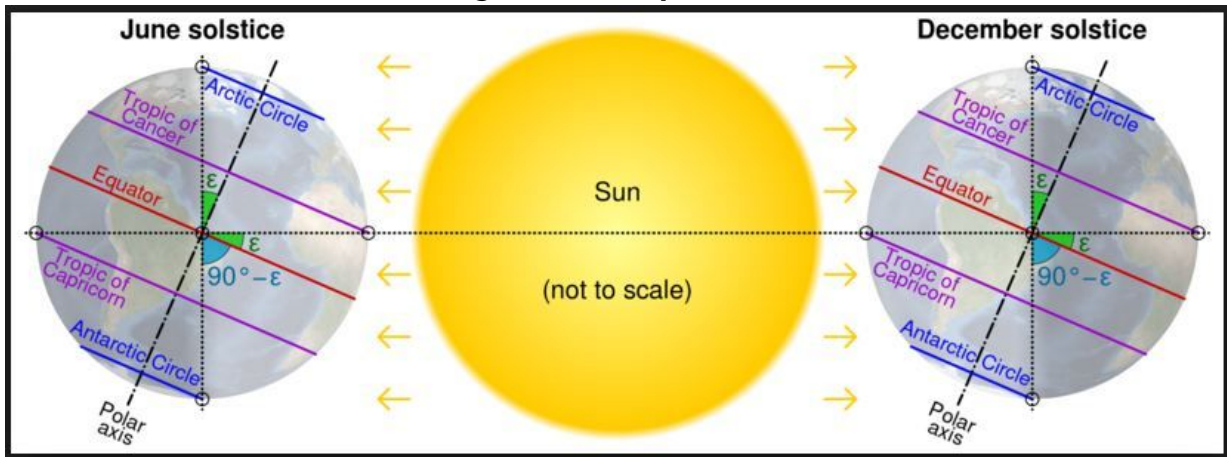
<http://www.southgateschools.com/web/?idpage=8979&iduser=564>, June 2014

**Question 11: Text Input**

3 marks

Surface ocean currents are generally driven by ... .

This image refers to question: 12, 13



**Question 12: Text Input**

3 marks

When the sun is directly overhead the Tropic of Capricorn, it is summer in the ... Hemisphere.

**Question 13: True/False**

2 marks

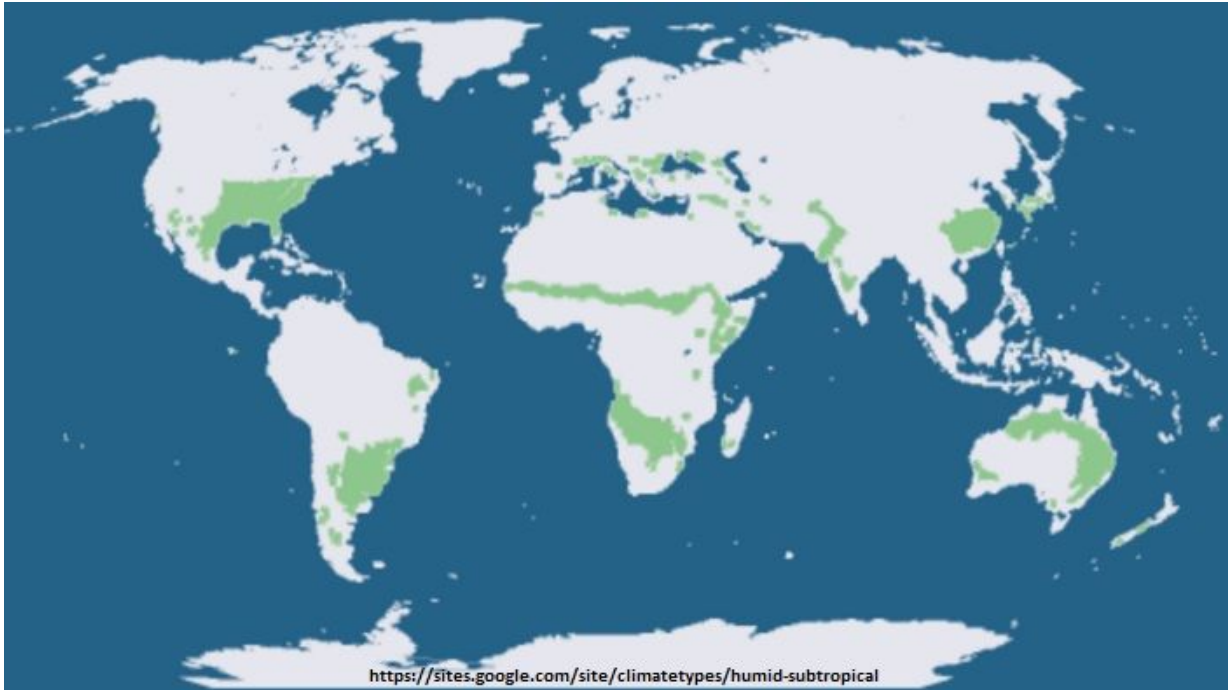
When the sun is directly overhead the Tropic of Cancer, that is at  $90^\circ$ , the days are longer and the nights are shorter in the Southern Hemisphere.

**TRUE**

**FALSE**



**This image refers to question: 14**



**Question 14: True/False**

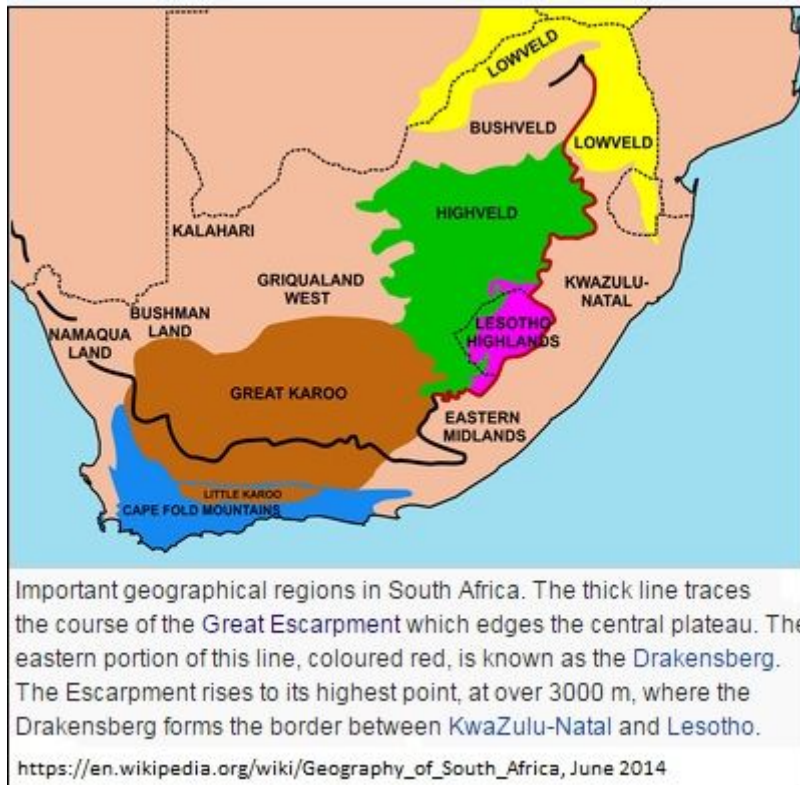
2 marks

A subtropical climate is found east and west of the tropical climate.

**TRUE**

**FALSE**

**This image refers to question: 15**



**Question 15: Please Fill In The Blanks**

4 marks

Beaufort West, situated in the (1), is surrounded by mountains which form the escarpment.

Its low rainfall can be attributed to the humid sea winds which cause rain to fall on the (2) side of the mountain.

Possible Answers: Great Karoo | Little Karoo | Lowveld | windward | leeward

<b>1</b>	
----------	--

<b>2</b>	
----------	--

**Question 16: True/False**

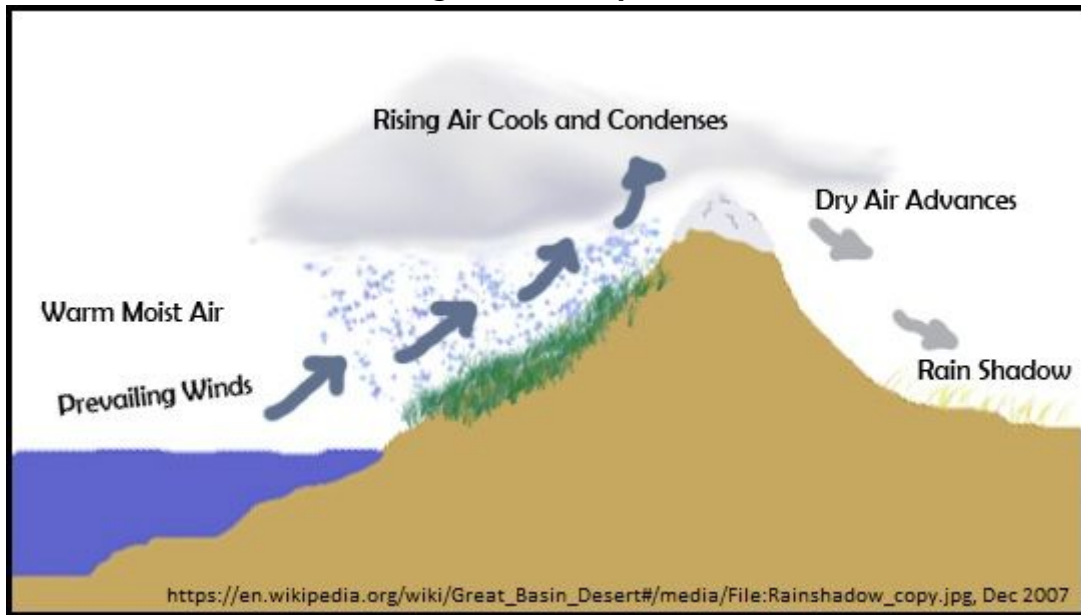
2 marks

South African Standard Time is the time every place in South Africa uses, as well as Lesotho and Swaziland.

<b>TRUE</b>
-------------

<b>FALSE</b>
--------------

**This image refers to question: 17**



**Question 17: True/False**

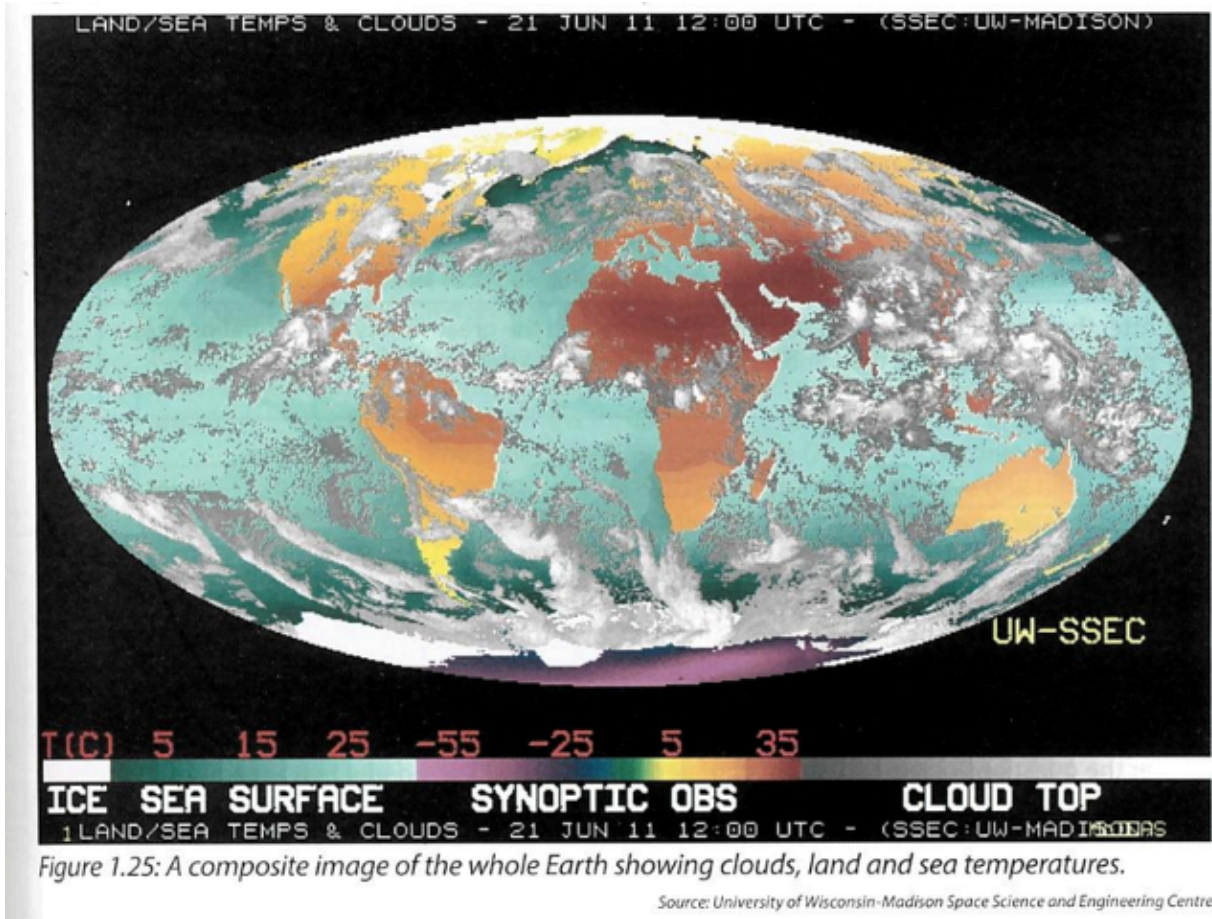
2 marks

Cloudy and rainy weather may be experienced on the windward side of Table Mountain, while warm sunny conditions may be experienced on the leeward side of the mountain.

**TRUE**

**FALSE**

**This image refers to question: 18, 19, 20**



**Question 18: True/False**

2 marks

It is night time in Australia.

**TRUE**

**FALSE**

**Question 19: Please Fill In The Blanks**

6 marks

Complete the list of the seven continents of the world in alphabetical order:

Africa, Antarctica, (1) , Australia, (2) , North America, (3) .

Possible Answers: Europe | South America | Arctic | Asia

<b>1</b>	
<b>3</b>	

<b>2</b>	
----------	--

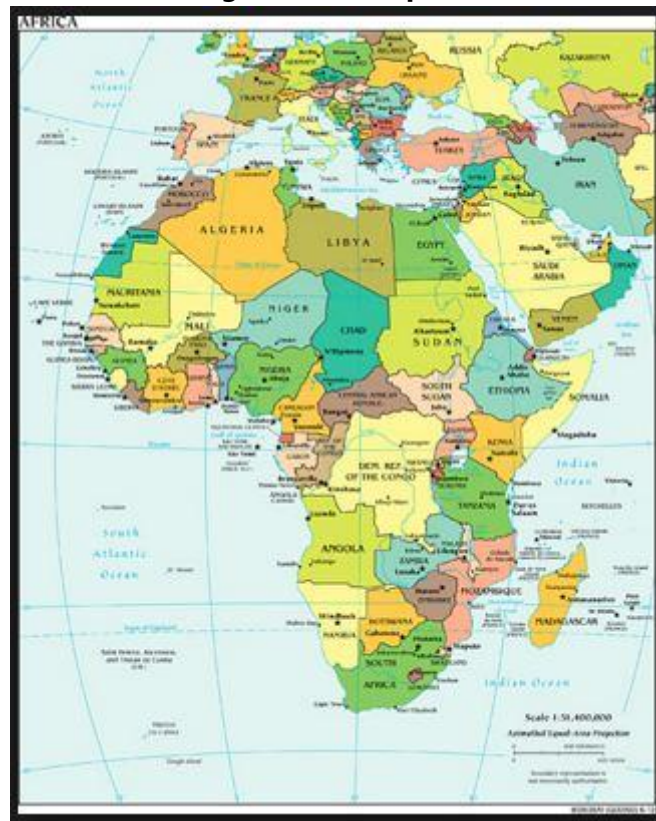
**Question 20: Text Input**

3 marks

What season was it in the Southern Hemisphere when this image was taken?

Answer in one word.

**This image refers to question: 21**



**Question 21: Please Fill In The Blanks**

4 marks

1: 500 000 is an example of a (1) scale and is used on a (2) scale map.

Possible Answers: large | small | line | ratio | word

<b>1</b>	<input type="text"/>
----------	----------------------

<b>2</b>	<input type="text"/>
----------	----------------------

**Question 22: Multiple Choice**

4 marks

South Africa's Standard Time is ... .

- |          |       |
|----------|-------|
| <b>A</b> | 12:00 |
| <b>B</b> | 14:00 |
| <b>C</b> | 00:00 |
| <b>D</b> | 18:00 |
- 

**Question 23: Multiple Choice**

4 marks

The distance between two schools on a map is 6 cm. If the map has a number scale of 1: 10 000, what is the actual distance on the ground?

- |          |               |
|----------|---------------|
| <b>A</b> | 60 metres     |
| <b>B</b> | 0, 6 metres   |
| <b>C</b> | 6 kilometres  |
| <b>D</b> | 60 kilometres |
| <b>E</b> | 0, 6 km       |
-

**This image refers to question: 24**



**Question 24: Text Input**

3 marks

There is a big island east of southern Africa. What is its name?

**This image refers to question: 25, 26**



**Question 25: Please Fill In The Blanks**

4 marks

The two main components of a satellite are a/an (1) and a/an (2) .

Select your answers in alphabetical order.

Possible Answers: petrol driven engine to propel the satellite through space | antenna to send and receive information | GPS to guide the satellite on the right path | power source such as a solar panel or battery

<b>1</b>	<input type="text"/>
----------	----------------------

<b>2</b>	<input type="text"/>
----------	----------------------



**Question 26: True/False**

2 marks

A geostationary satellite travels from west to east above the equator and it moves in the same direction and at the same rate that the Earth is spinning.

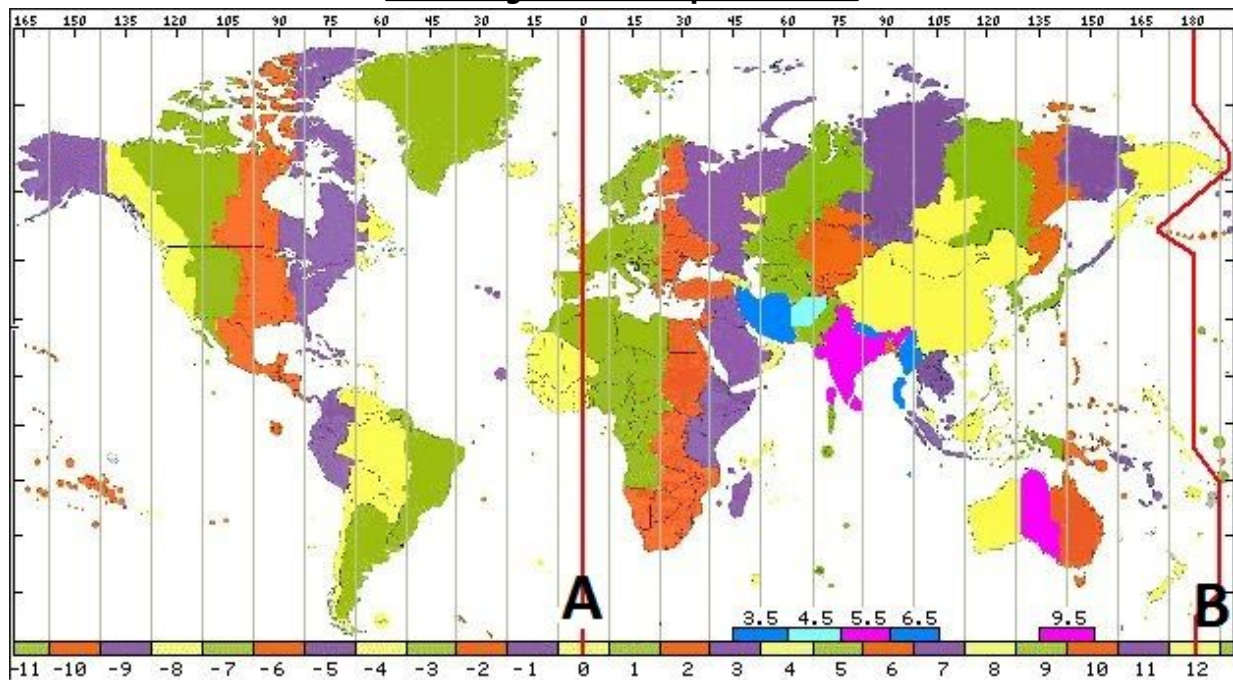
Based on this, is the statement below true or false?

**"From Earth, a geostationary satellite looks like it is standing still since it is always above the same location."**

**TRUE**

**FALSE**

**This image refers to question: 27**



**Question 27: Text Input**

3 marks

The line at 180° E/W (marked B on the map) is called the ... .. Line.

Write the answer as two words.

**Question 28: Please Fill In The Blanks**

4 marks

Temperate climate is divided into two regions, namely the (1) temperate region and the (2) temperate region.

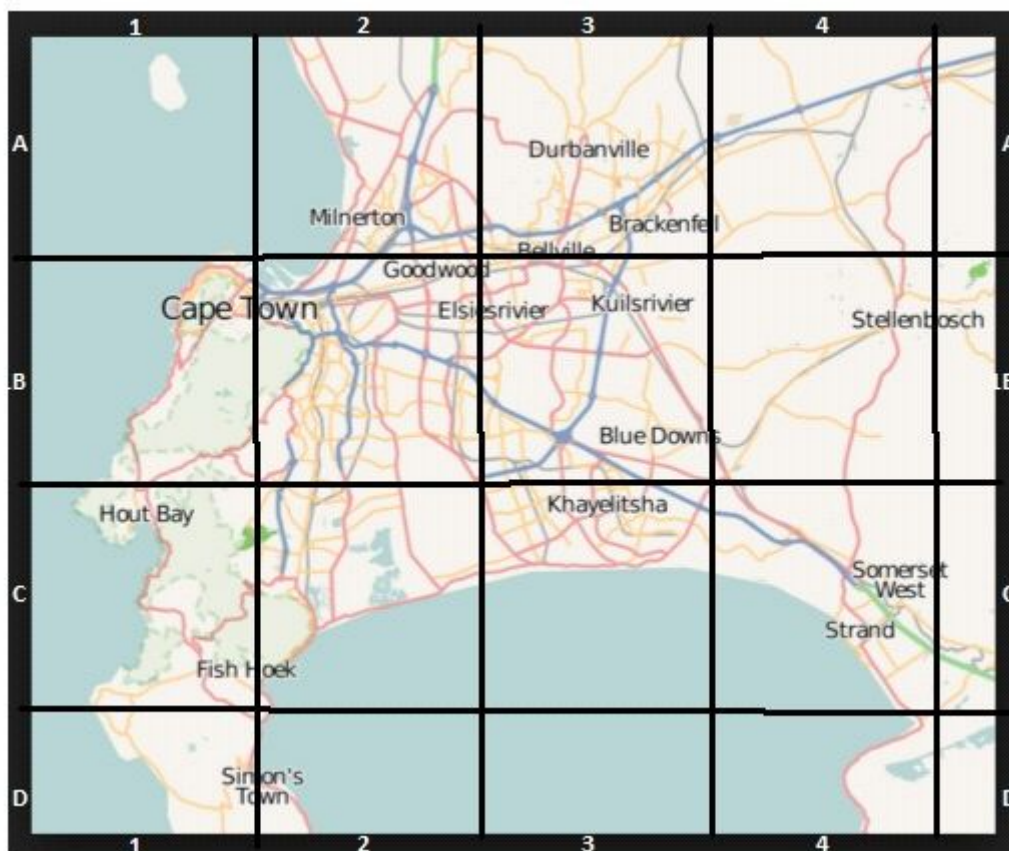
(Give your answers in alphabetical order.)

Possible Answers: polar | continental | tropical | maritime

<b>1</b>	
----------	--

<b>2</b>	
----------	--

**This image refers to question: 29**



**Question 29: True/False**

2 marks

The alphanumeric reference for Khayelitsha is C3.

<b>TRUE</b>
-------------

<b>FALSE</b>
--------------

**This image refers to question: 30**



**Question 30: Multiple Choice**

4 marks

This satellite image could be used by researchers to:

- |          |   |
|----------|---|
| <b>A</b> | Monitor plant disease                                       |
| <b>B</b> | Assess the quality of the soil                              |
| <b>C</b> | Locate areas that have a large population using electricity |
| <b>D</b> | Monitor pollution from large factories                      |

---

**Total: 98 Marks**