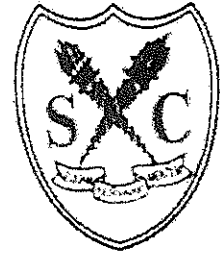


AEQVAM SERVARE MENTEM

SASTRI COLLEGE
NOVEMBER EXAMINATION 2018
DEPARTMENT OF SOCIAL SCIENCES
SOCIAL SCIENCES: GEOGRAPHY
GRADE 8



AEQVAM SERVARE MENTEM

EXAMINER: MS K. SINGH

TIME: 1 HOUR

MODERATOR: MRS G.T. MOODLEY

MARKS: 60

INSTRUCTIONS:

1. This question paper consists of EIGHT PAGES.
 2. There are FIVE questions. Answer ALL.
 3. Write neatly and legibly.
 4. Rule off after each question.
-

QUESTION ONE

MATCH COLUMN A WITH COLUMN B. WRITE ONLY THE APPROPRIATE ALPHABET IN YOUR ANSWER SHEET. FOR EXAMPLE 1.1. Z

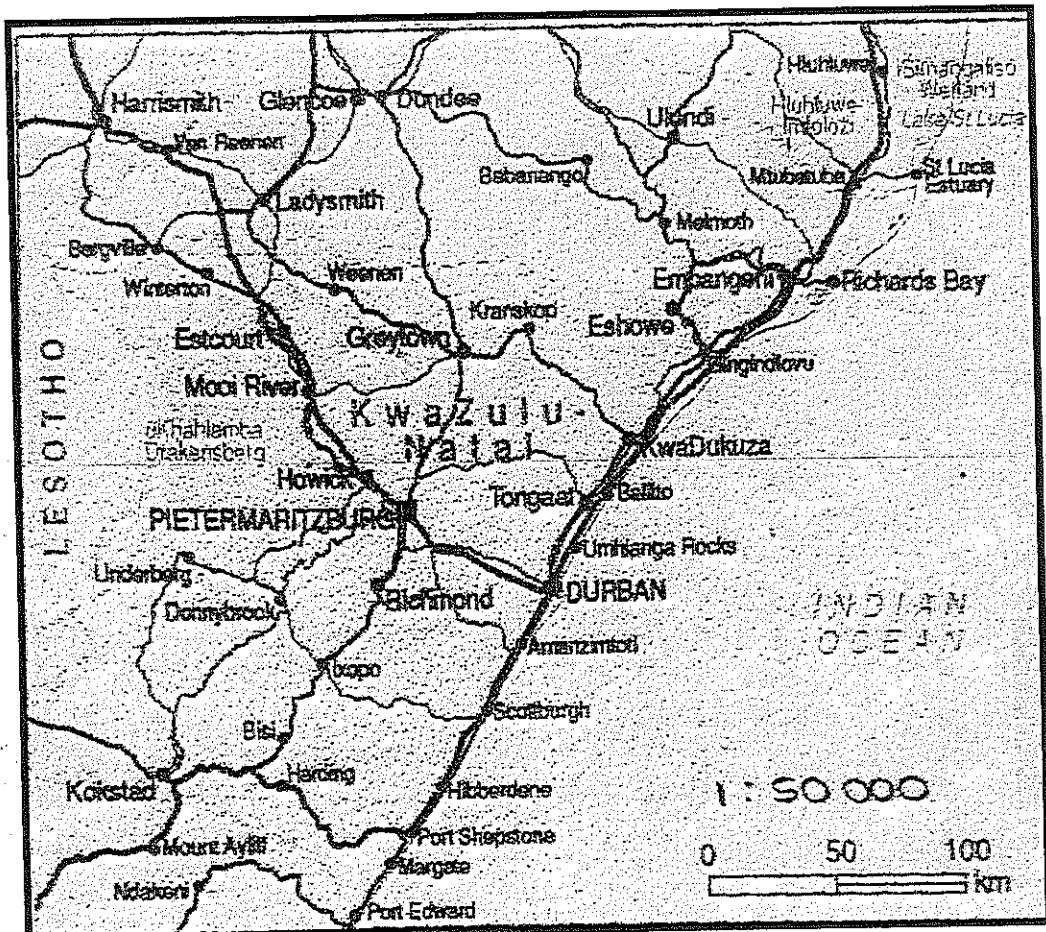
COLUMN A	COLUMN B
1.1. Solar radiation	A. An area that does not have access to the sea.
1.2. Inland	B. Height above sea level.
1.3. Rotation	C. The heat from the sun.
1.4. Coordinates	D. General conditions of the atmosphere a place can expect.
1.5. Climate	E. When the length of day and night is the same number of hours.
1.6. Altitude	F. Turning on a fixed point.
1.7. Equinox	G. Imaginary line between the South Pole around which the Earth rotates.
1.8. Earth's axis	H. The points where latitude and longitude lines cross.
1.9. Parallel arcs	I. Another word for lines of longitude.
1.10. Meridians	J. Curved lines that go around a sphere and never cross.

[10]

QUESTION TWO

REFER TO THE MAP OF KWA ZULU NATAL AND ANSWER THE QUESTIONS SET.

A



B



2.1. State the **THREE** types of scales?

(3x1)(3)

2.2. Convert the scale from **Diagram A** to a word scale.

(1x2)(2)

2.3. Using **Diagram A**, calculate the actual distance from Pietermaritzburg to Durban in Kilometres. Show all workings.

(3x1)(3)

2.4. Refer to **Diagram B** and state the cardinal directions of the following:

A. Cape Town from Durban

(1x1)(1)

B. Maputo from Bloemfontein

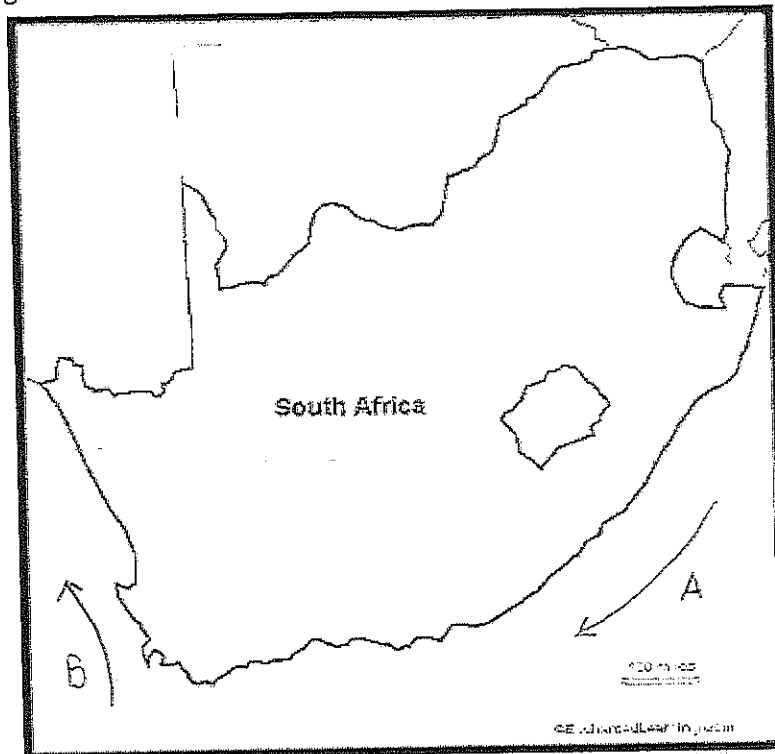
(1x1)(1)

[10]

QUESTION THREE

3.1. State the FIVE factors that influence temperature and rainfall in climate regions. (5x1)(5)

3.2. Refer to the diagram below and answer the questions that follow:



3.2.1. Name the TWO ocean currents labelled A and B. (2x1)(2)

3.2.2. How does ocean current B influence the temperature along the West coast of Africa. (1x1)(1)

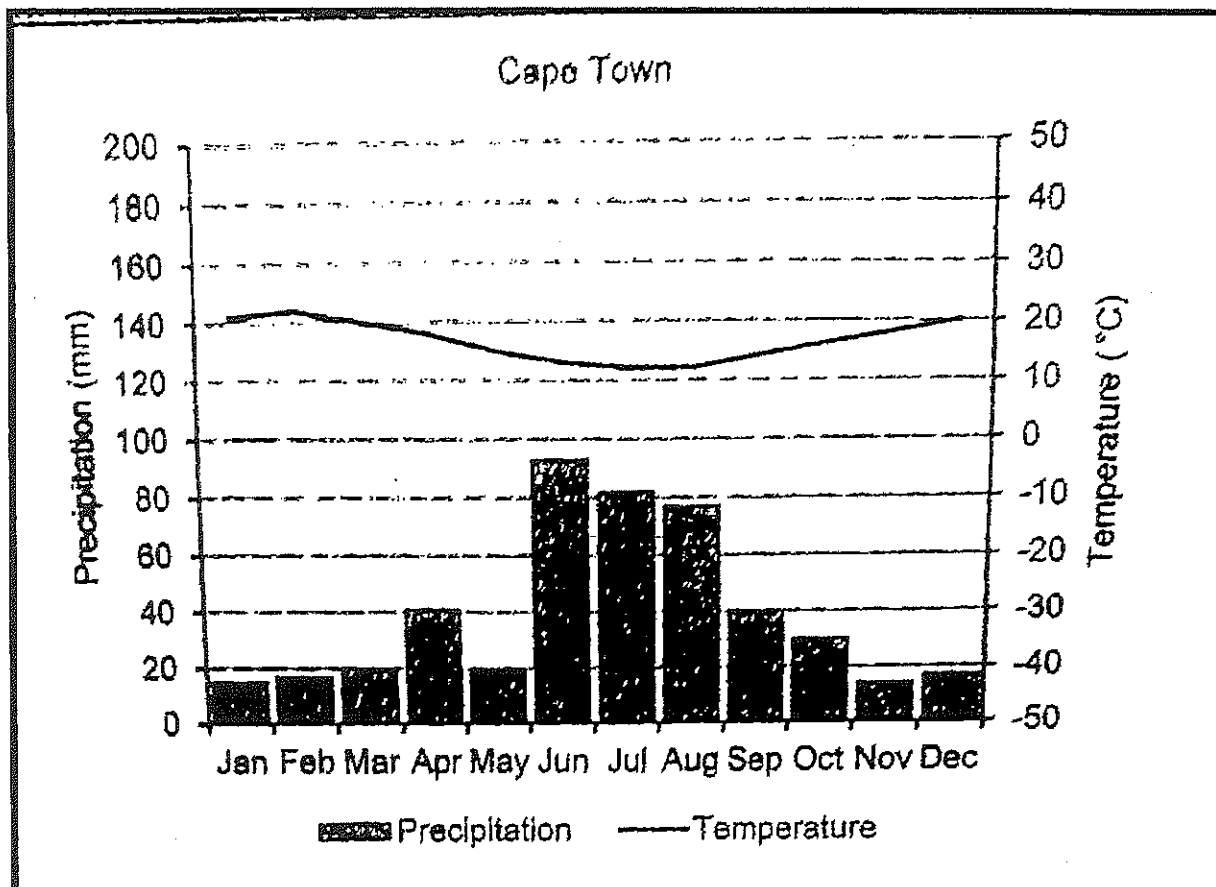
3.2.3. How does ocean current A influence the temperature along the East coast of Africa. (1x1)(1)

3.2.4. State the compass direction in which ocean current A is flowing towards. (1x1)(1)

[10]

QUESTION FOUR

STUDY THE GRAPH BELOW AND ANSWER THE QUESTIONS THAT FOLLOWS.

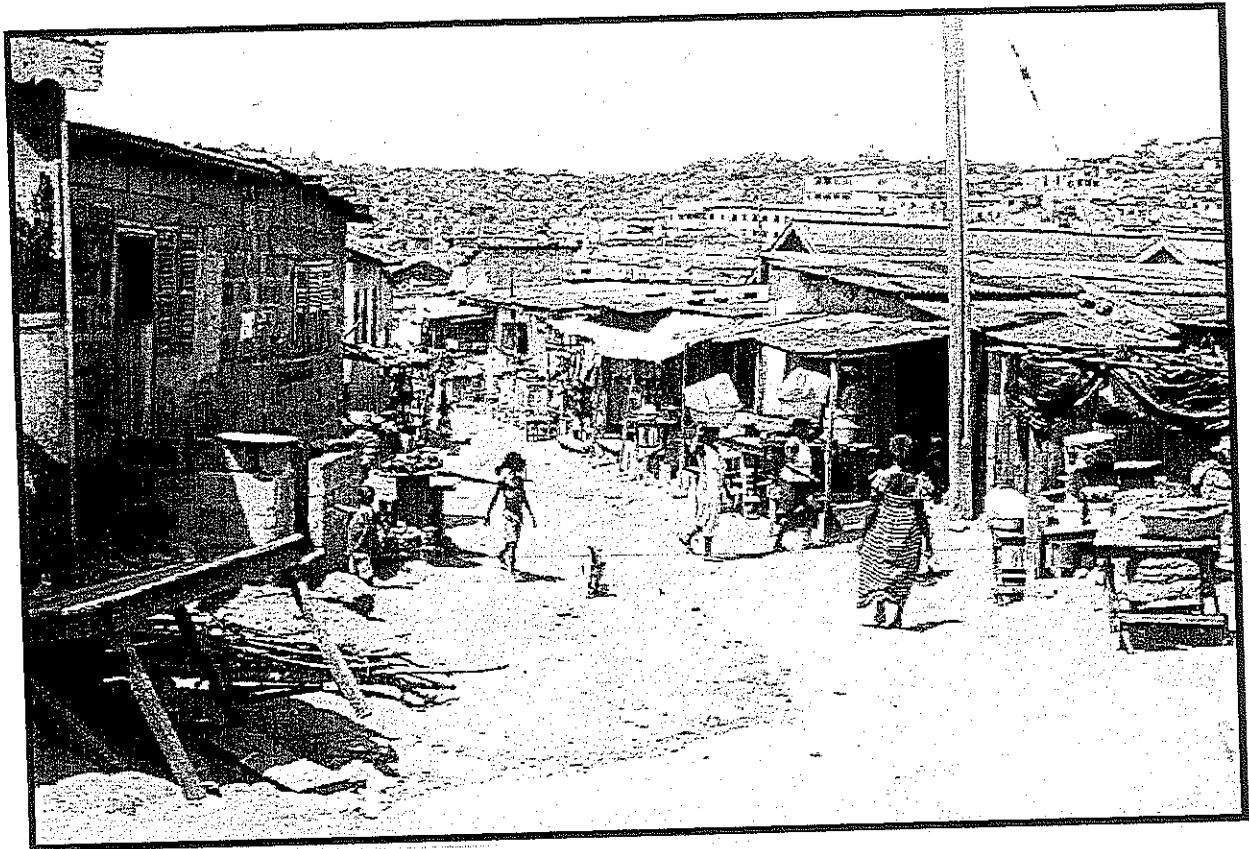


- 4.1. State the unit of measurement for temperature. (1x2)(2)
- 4.2. Identify the **TWO** months that receive the highest rainfall. (2x1)(2)
- 4.3. Identify any **TWO** months that receive the same amount of rainfall. (2x1)(2)
- 4.4. In which month has the temperature been the coldest? (1x1)(1)
- 4.5. In which month has the temperature been the hottest? (1x1)(1)
- 4.6. Who do you think will find this information about climate useful? (1x2)(2)

[10]

QUESTION FIVE

REFER TO THE PICTURE BELOW AND ANSWER THE QUESTIONS SET.



5.1. Define the term rural settlement.

(1x2)(2)

5.2. List FIVE reasons why people will leave a rural area and settle into an urban area.

(1x5)(5)

5.3. Explain THREE primary activities that the community engages in a rural settlement.

(1x3)(3)

[10]

QUESTION SIX

In south Africa, mini-bus taxis are a type of public transport system because they carry members of the public. Millions of people use mini-bus taxis every day to get to their required destinations.



6.1. You are required to write a short speech to your neighbouring community explaining to them **FIVE** advantages of using a mini-bus taxi in their community.

In your speech you should talk about the following:

- Routes
- Working hours
- Time to destination
- Picking up of passengers
- Popularity amongst commuters

[10]

TOTAL MARKS: 60